

The Building Blocks of Strength

IntegrityLifeInsuranceCompany ■ NationalIntegrityLifeInsuranceCompany ■ Western-SouthernLifeAssuranceCompany

A+

A.M. Best
Rating

Member of a
Mutual
Holding
Company

1888

Heritage

Capital
Confidence

NRSRO RATINGS POWER¹

A+

AM BEST (Superior)
2nd highest of 13 ratings

AA-

S&P (Very Strong)
4th highest of 21 ratings

AA

Fitch (Very Strong)
3rd highest of 21 ratings

BENEFIT OF MUTUALITY

No

publicly traded company
or private equity owned pressure
for short-term results.

HISTORIC STRENGTH

Years

of parent company history.

Decades

of experience.

Scores

of stability.

SIGNIFICANTLY HIGHER CAPITAL-TO-ASSET RATIO OF TOP COMPETITORS

Capitalization is an indicator of financial stability that can help our company weather challenging economic times.

Avg. of 15 Largest Publicly Traded Life Insurers

3.7%

Western & Southern Financial Group

14.9%

As of December 31, 2024, total assets were \$80.9 billion, total liabilities were \$68.8 billion, and total equity was \$12.1 billion. The W&S GAAP capital to asset ratio is 14.9%, as compared to the 3.7% average of the 15 largest publicly traded life insurers doing business in the U.S.

COMDEX QUALITY²

Comdex is a composite of industry ratings.
Western & Southern Financial Group ranks
in the upper tier of a 1-100 scale.
Compare to your other product providers.

AMERICAN COMPANY

We're proud of our U.S. roots,
of people helping people,
centered in Cincinnati.

RECOGNIZED VALUE

Western & Southern Financial Group is
listed on the Fortune 500®, which
represents two-thirds of U.S. economy with
\$14.8 trillion in revenue. We're proud to be
part of this prestigious list.

Source: Fortune® Magazine, "Fortune 500® (70th Edition)"; June/July 2024

95

Comdex
Ranking

U.S.

Owned &
Operated

Fortune
500®

Company

Source: Fortune® Magazine, "Fortune 500® (70th Edition)," June/July 2024

LIFE INSURANCE & ANNUITIES CREATE BALANCE TO SUPPORT OUR STRENGTH

Life policies have **mortality** risk. Annuities have **longevity** risk. We offer both product lines to balance our portfolio and support our strength.



**INVESTMENT AND
INSURANCE
PRODUCTS ARE:**

- NOT FDIC INSURED • NOT INSURED BY ANY FEDERAL GOVERNMENT AGENCY
- NOT A DEPOSIT OR OTHER OBLIGATION OF, OR GUARANTEED BY, THE BANK OR ANY OF ITS AFFILIATES
- SUBJECT TO INVESTMENT RISKS, INCLUDING POSSIBLE LOSS OF THE PRINCIPAL AMOUNT INVESTED

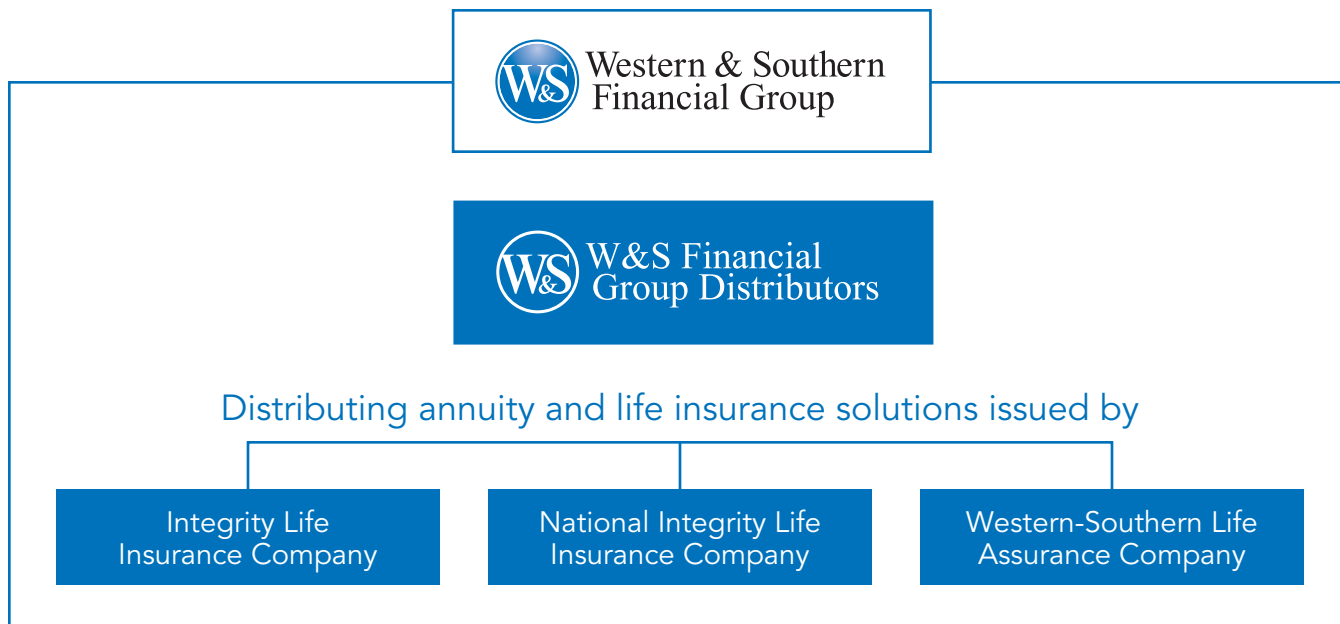


Chart is for illustrative purposes only and does not reflect the organization's legal structure.

WSFinancialPartners.com

1 The credit rating agencies that rate Western & Southern Financial Group insurance member companies are registered as Nationally Recognized Statistical Rating Organizations (NRSRO) with the U.S. Securities and Exchange Commission (SEC). Ratings shown here are correct as of April 2025 and are subject to change. Ratings refer to the claims-paying ability of the insurance company and do not reflect the performance or safety of any investment product. The rating agencies listed are independent of each other and use proprietary evaluation criteria and rating scale. Ratings are subject to change from time to time. Specific rating details are as follows:

A+ AM BEST (Superior) Superior ability to meet ongoing insurance obligations. Second highest of 13 ratings; rating held since June 2009.

AA- S&P (Very Strong) Very strong financial security characteristics. Fourth highest of 21 ratings; rating held since August 2018.

Fitch AA (Very Strong) Very strong capacity to meet policyholder and contract obligations on a timely basis. Third highest of 21 ratings; rating held since June 2009.

2 Comdex ranking, current as of May 2025, is a composite of the financial strength ratings as determined by Standard & Poor's, Moody's, A.M. Best and Fitch rating agencies. It ranks insurers on a scale of 1 to 100 (where 1 is the lowest) in an effort to reduce confusion over ratings because each rating agency uses a different scale.

Issuer has sole financial responsibility for its products. All companies are members of Western & Southern Financial Group. W&S Financial Group Distributors, Inc., Cincinnati, OH, (doing business in CA as W&S Financial Insurance Services) is an affiliated life insurance agency of the issuer.

This may contain information obtained from third parties, including ratings from credit ratings agencies such as Standard & Poor's. Reproduction and distribution of third party content in any form is prohibited except with the prior written permission of the related third party. Third party content providers do not guarantee the accuracy, completeness, timeliness or availability of any information, including ratings, and are not responsible for any errors or omissions (negligent or otherwise), regardless of the cause, or for the results obtained from the use of such content. THIRD PARTY CONTENT PROVIDERS GIVE NO EXPRESS OR IMPLIED WARRANTIES, INCLUDING, BUT NOT LIMITED TO, ANY WARRANTIES OF MERCHANTABILITY OR FITNESS FOR A PARTICULAR PURPOSE OR USE. THIRD PARTY CONTENT PROVIDERS SHALL NOT BE LIABLE FOR ANY DIRECT, INDIRECT, INCIDENTAL, EXEMPLARY, COMPENSATORY, PUNITIVE, SPECIAL OR CONSEQUENTIAL DAMAGES, COSTS, EXPENSES, LEGAL FEES, OR LOSSES (INCLUDING LOST INCOME OR PROFITS AND OPPORTUNITY COSTS OR LOSSES CAUSED BY NEGLIGENCE) IN CONNECTION WITH ANY USE OF THEIR CONTENT, INCLUDING RATINGS. Credit ratings are statements of opinions and are not statements of fact or recommendations to purchase, hold or sell securities. They do not address the suitability of securities or the suitability of securities for investment purposes, and should not be relied on as investment advice.

No bank guarantee • Not a deposit • May lose value • Not FDIC/NCUA insured • Not insured by any federal government agency

© 2019-2025 Western & Southern Financial Group. All rights reserved.